



LIVERY STREET

FLOORPLANS

20,556 SQ FT OF
HIGH QUALITY, FULLY
REFURBISHED COLUMN-
FREE OFFICE SPACE
WITHIN THE CORE OF
BIRMINGHAM'S CBD.



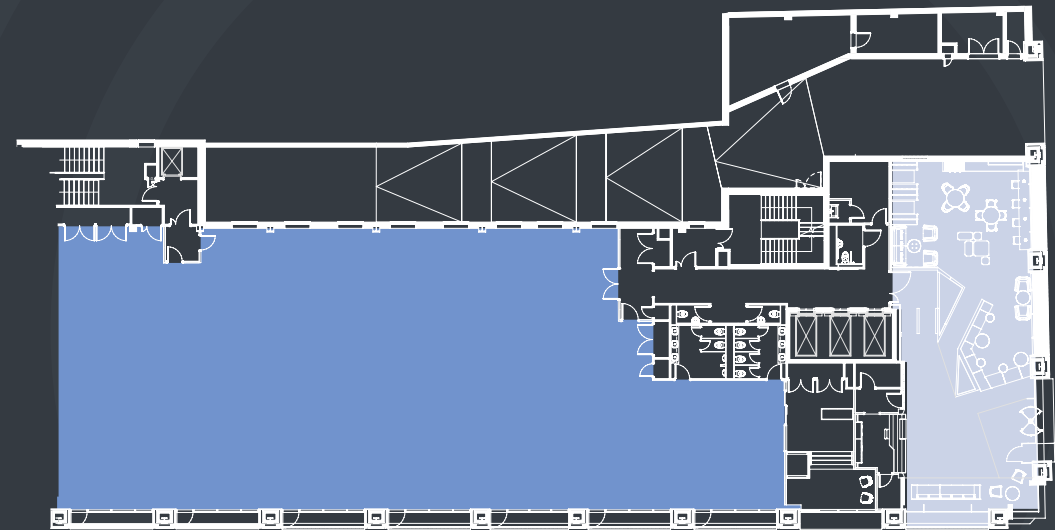
10LIVERYSTREET.CO.UK



AVAILABILITY

FLOOR	SQ FT	SQ M
5TH FLOOR	LET TO MOTT MACDONALD	
4TH FLOOR	LET TO MOTT MACDONALD	
PART 3RD FLOOR	LET TO MOTT MACDONALD	
PART 3RD FLOOR	2,266	210
2ND FLOOR	11,371	1,056
1ST FLOOR	LET TO DIRECT LINE	
GROUND FLOOR: OFFICE / RETAIL / LEISURE	6,919	643
TOTAL	20,556	1,909

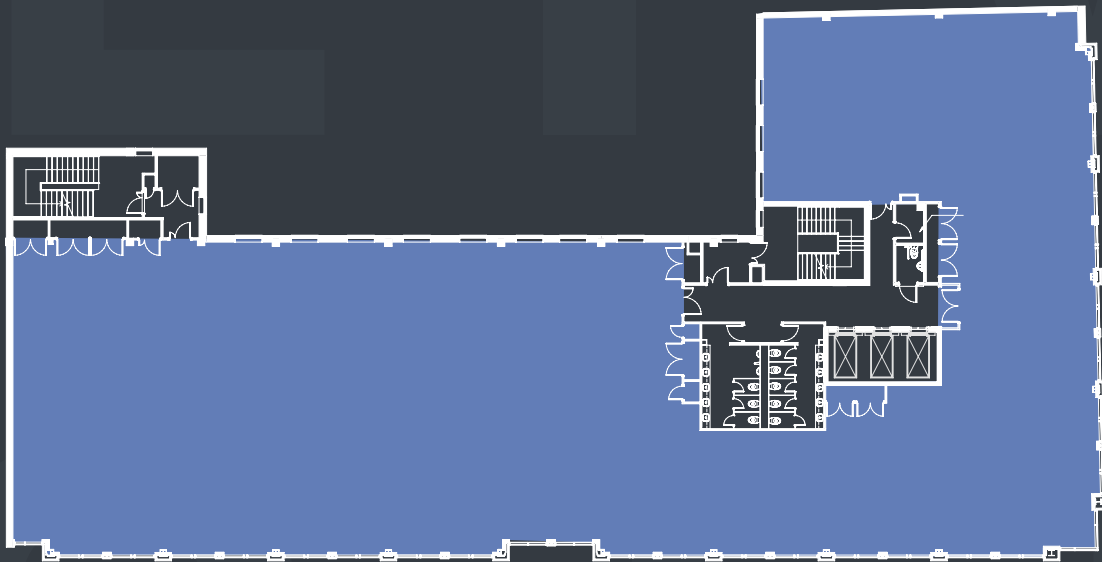
The property has a secure basement car park with 26 parking spaces including 2 disabled bays.



GROUND FLOOR

GROUND FLOOR:
OFFICE / RETAIL / LEISURE

6,919 SQ FT



2ND FLOOR

AVAILABLE: 11,371 SQ FT



3RD FLOOR

AVAILABLE: 2,266 SQ FT

2ND FLOOR

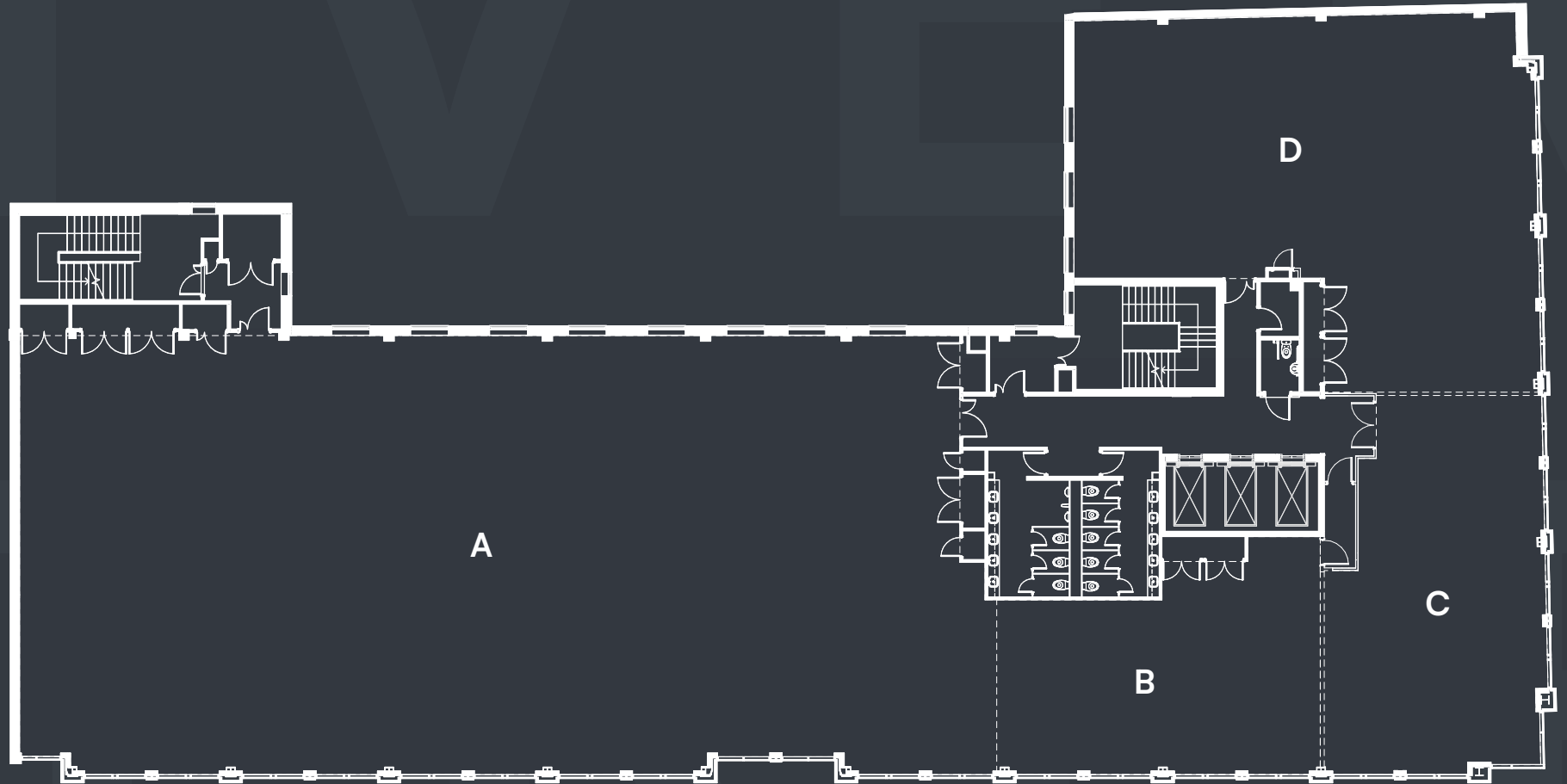
HOVER VIEW SPACE

SMALL SUITES

D	2,295 SQ FT
C, D	3,486 SQ FT
B, C, D	4,504 SQ FT

LARGE SUITES

A	6,599 SQ FT
A, B	7,617 SQ FT
A, B, C	8,807 SQ FT
A, B, C, D	11,102 SQ FT



**AVISON
YOUNG**

GEORGE JENNINGS

george.jennings@avisonyoung.com
07900 678 125



**LIVERY
STREET**



JONATHAN OTTEWELL

jottewell@savills.com
07972 000 150

AVISON YOUNG and SAVILLS for themselves and for the vendors or lessors of this property whose agents they are give notice that: (i) the particulars are set out as a general guideline only for the guidance of intending purchasers or lessees and do not constitute, nor constitute part of an offer or contract. (ii) all descriptions, dimensions, references to condition and necessary permission for use and occupation, and other details are given in good faith and are believed to be correct but any intending purchasers or tenants should not rely on them as statements or representation of fact but satisfy themselves by inspection or otherwise as to the correctness of each of them. (iii) no person in the employment of AVISON YOUNG and SAVILLS has any authority to make or give any representation or warranty whatsoever in relation to this property. (iv) all rentals and prices are quoted exclusive of VAT. September 2023

Crafted by CAB Property.